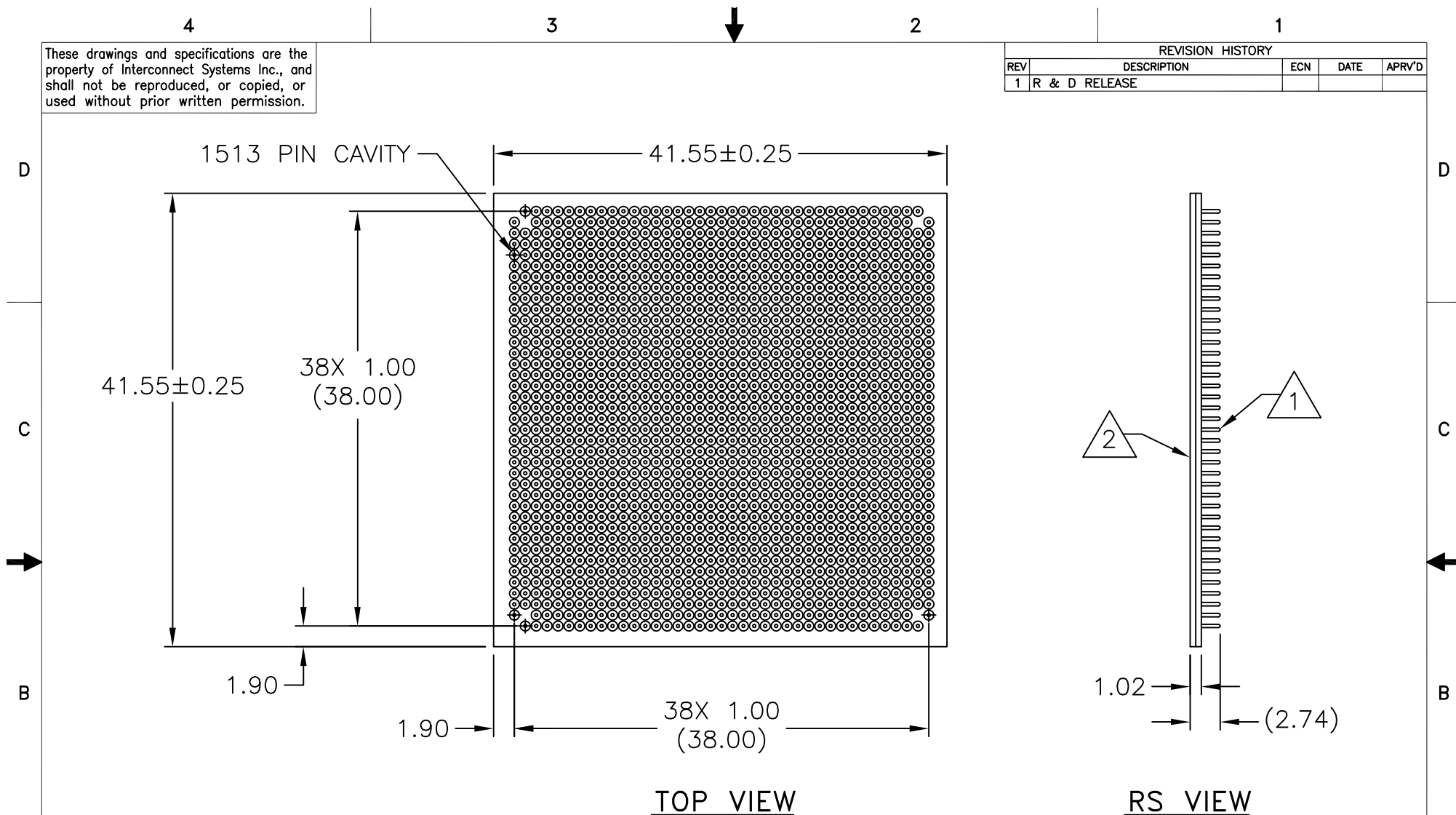


These drawings and specifications are the property of Interconnect Systems Inc., and shall not be reproduced, or copied, or used without prior written permission.

REVISION HISTORY				
REV	DESCRIPTION	ECN	DATE	APR'D
1	R & D RELEASE			



TOP VIEW


RS VIEW

NOTES:

1. PINS ϕ .30 [.012] X 2.74 [.108] LONG.
MATERIAL: PHOSPHOR BRONZE.
PLATING: HARD GOLD OVER NICKEL.

2. INSULATOR MATERIAL: FR4, BLACK, T_g 125°C.

METRIC CUSTOMER APPLICATION DRAWING

UNLESS OTHERWISE SPECIFIED: DIMENSIONS ARE IN MILLIMETERS [ALTERNATE] DIMENSIONS ARE IN INCHES TOLERANCES: ANGLES: $\pm 10^\circ$ FRACTIONS: $\pm 1/64$ DECIMALS: .X $\pm .25$.XX $\pm .13$.XXX $\pm .013$	CONTRACT NO.		 INTERCONNECT SYSTEMS INC. 708 VIA ALONDRA, CAMARILLO, CA 93012				
	DRAWN BY H. RANGLES	DATE 10/28/04			TITLE HiLo PIN BASE, BGA ATTACH, FR4, 39 X 39, 1513 PINS, 1.0mm PITCH, FOR P/N: HLP-391513-B-10		
	DESIGNER H. RANGLES	DATE 10/28/04	CHECKER	SIZE A	SCALE 2/1	DRAWING NO.	REV 1
	QA	DATE	PROCESS ENG.	DATE	SHEET 1 OF 1		